

Wall Mounted vs Floor Mounted Toilets – 9 Important Difference

Wall Mounted vs Floor Mounted Toilets

The toilet is an important piece in the bathroom due to its recurrent use. The average person in his life span spends a year and a half in the bathroom. So choose your toilet wisely. in this article, we will discuss the difference between Wall Mounted vs Floor Mounted Toilets.

So, Let's start,

9 Main Differences Between Wall Mounted vs Floor Mounted Toilets

1). Appearance

Wall-mounted WC also known as wall-hung Wc. If you want a high-end, modern look for your bathroom go for a **wall-hung WC**. Its beauty lies in the floating effects created by the commode. This type of WC is fixed to the wall or in other words it is hung on the wall with no part of the WC touching the floor.



Wall Mounted vs Floor Mounted Toilets

It has a tank located inside the wall, A flush actuator the device that controls the flow, a bowl, and a carrier which is made of solid Steel that provides sufficient support to carry the tank and also anchor the bowl. To conceal the carrier a secondary wall is erected in the bathroom which is called a ledge wall. Some varieties come with advanced features like the dual flush system which helps in saving water. it comprises two buttons for flushing less or more water. so that the user can decide upon the amount of water that needs to be used.

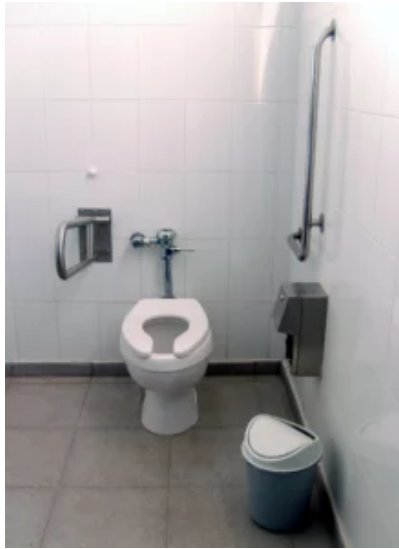
On the other hand,

Floor-mounted WC is also known as a standard toilet. **Floor-mounted toilets** are more traditional and very commonly used. In the case of **floor-mounted WC**, the tank is clearly visible and the bowl connects down to the floor. They are two types

One Piece commode is manufactured as a single unit by fusing the Flush tank & bowl and a two-piece commode is composed of the separate bowl and tank parts. These are installed separately and connected during installation. **Floor mounted WC** are bolted to the floor.

2). Height

When it comes to **wall-hung toilets**, they can be installed at various heights ranging from 15 to 19 inches from the ground level. 15 inches is considered standard but elderly and disabled individuals may prefer a seat installed slightly higher which is easier to sit down on. If someone prefers the seat height to be high in the WC, can be fixed at that particular height.



Wall Mounted vs Floor Mounted Toilets

If all users are tall or unusually short, a **wall-hung toilet** can mean extra comfort and ease of access.

Be sure to account for seat height when measuring.

On the other hand,

In the case of **floor-mounted toilets**, the height of any given model is fixed and we cannot make any adjustments due to the shape and design of the toilet. **floor-mounted toilet** coming either a standard height of 14.5 inches or a comfort height of 16 inches. However, we can use a toilet seat Riser to add extra height to the toilet. A 2inch toilet seat riser can easily convert a standard height toilet into a comfortable height toilet. Toilet seat risers go up to 6 inches in height.

3). Space

A major advantage of **wall-hung toilets** is the amount of space you can save. Technically they are no bigger or smaller than **floor-mounted toilets**. but because the tank is installed inside the wall it saves space. Since they take up less space, this frees up more room to install other items or appliances. With a **wall-hung toilet**, you can save up to 10 inches compared

to a **floor-mounted model** simply by having the tank inside the wall.



In a small bathroom, a **wall-hung WC** will occupy less space making your bathroom seems larger.

on the other hand,

The main drawback of **floor mounted unit** in comparison to the **wall-mounted unit** is, It takes up more space, looks bulky, and can make a small bathroom look even more cramped and smaller.

4). **Cleaning**

Since the commode is raised and not touching the floor, the bathroom floor is not only easier to Mop and sweep but also more hygienic.



Wall Mounted vs Floor Mounted Toilets

Whereas,

A **floor-mounted commode** is not easy to clean as it is

difficult to access floor areas around the base of the commode and the junction between the flushing system and the bowl. This can become a chore and if not cleaned regularly it can collect dirt and look very unattractive.

5). Installation

Wall-mounted WC is required thicker walls to accommodate their tank and flushing systems. Many homes may not have thick enough walls which makes them difficult to install. One can construct an extra wall to achieve the required thickness.



Wall Mounted vs
Floor Mounted
Toilets

This other thicker wall is called a ledge wall. This is a larger job overall & requires more complicated plumbing, hence it requires a more skilled installation and partial removal of the wall during installation.

please note,

In cold climates, the tank should not be mounted to an exterior wall. It can result in frozen pipes and huge hassles. Installing a **wall-mounted WC** into your bathroom cannot be an afterthought. The model has to be purchased and plumbing fixtures of a concealed flush installed and integrated with

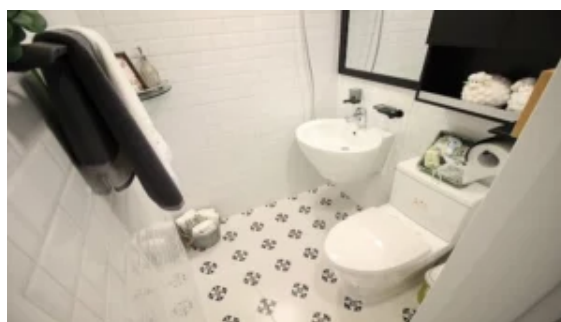
the plumbing lines before tiling. Expect to pay about twice as much for installation but prices may vary in different areas.

Whereas,

It is easier to fit **floor-mounted WC** than **wall-mounted WC**. Also, the plumbing work needed for a **floor-mounted WC** is less complicated than for a **wall-mounted WC**.

6). Repair

When it comes to repairs **wall-hung WC** are generally more time-consuming and difficult to fix because the tank is inside the wall. Making access more difficult. However, some models feature access panels that allow workers to get to the tank without needing to tear the wall down.



Wall Mounted vs Floor Mounted Toilets

Whereas,

Floor-mounted toilets are simpler to fix because all the parts are out in the open for easy access.

7). Maintenance

Wall-mounted toilets require frequent maintenance because their brackets and bolts become loose over a period of time due to continuous use.



Wall Mounted vs Floor Mounted Toilets

On the other hand,

Floor-mounted WC is highly affordable and the replacement parts are easily available which makes them easy to repair. Additionally, these are more stable than **wall-hung toilets** because they are installed directly on the floor.

8). Noise

If the loud noise of a flushing toilet is something that bothers you, A **wall-hung toilet** might be a good choice. Since the tank is inside the wall, the sound of refilling after each flush is much brighter.



Wall Mounted vs Floor Mounted Toilets

Whereas,

In the case of **floor mounted toilet**, the tank is located out and it creates noise at the time of refill.

9). Price



Wall Mounted vs Floor Mounted Toilets

The price of **wall-mounted WC** is higher due to the following reasons.

The material cost and installation costs of **wall-mounted toilets** are higher compared to those of **floor-mounted toilets**.

Installation is more expensive because part of the wall needs to be removed and it requires thicker walls.

Wall-mounted WC can either be installed on an exterior wall or an extra wall needs to be constructed to achieve desired wall thickness. Also, a carrier has to be installed in the wall to lift WC. This adds to the costs.

When it comes to **wall-hung toilets**, Often seats and tanks are sold separately, which can increase the overall price tag.

On the other hand,

Floor mounted WC are cheaper as compared to **wall mounted WC** unless you choose a higher model from one of the top sanitary ware manufacturers. Also, you save on the installation part.

Conclusion

The right toilet for your bathroom will always be a question

of personal taste. Choose a model that you like and that suits the overall design scheme of your bathroom.



Wall Mounted vs Floor Mounted Toilets

A **wall-hung toilet** is likely to be a more appropriate choice for a modern minimalistic décor theme. While A **floor-mounted toilet** will work better with any classic design. you also need to take the budget for your bathroom into account.

So, You can consider these differences Wall Mounted vs Floor Mounted Toilets to choose your toilet seat for your bathroom.

If you like this article then please share it with your friends & also like our [Facebook Page](#) and join our [Telegram Channel](#).

If I have missed any information or you have any doubts related to Wall Mounted vs Floor Mounted Toilets then you can mention it in the comments section and for more such blog posts just click subscribe to myengineeringsupport.com so that you won't miss the new post.

If you want a PDF copy of this,



Wall Mounted vs Floor Mounted Toilets

Do let's know by commenting & you can message us on our [Instagram](#) & [telegram channel](#), or you can download it from the top right-hand corner of this post.

Thanks For the Great Attention!

Also, Read,

[Reinforcement technical terms](#)

[1000Sqft house construction cost in 2022](#)

[concealed wiring and open wiring](#)

Related Video,

Wall Mounted vs Floor Mounted Toilets

